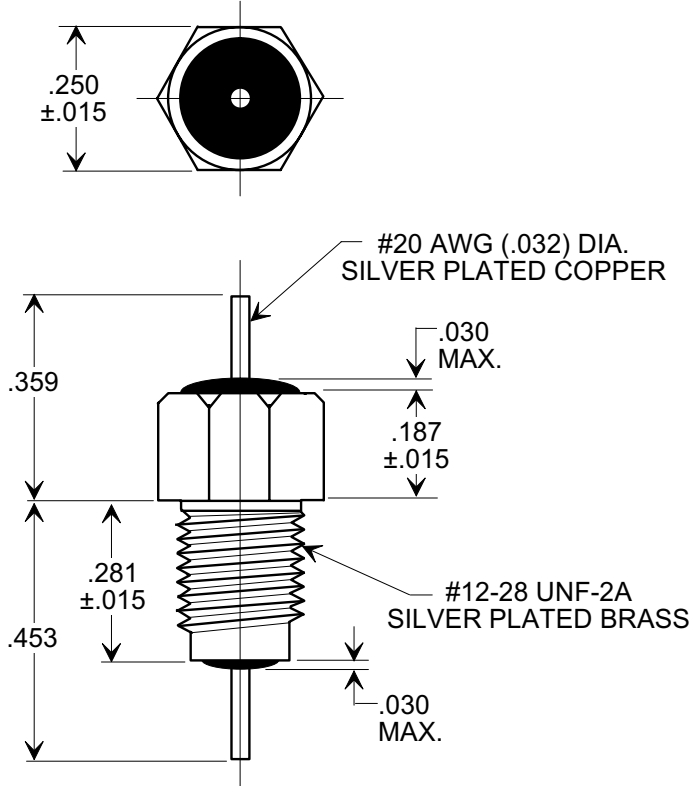
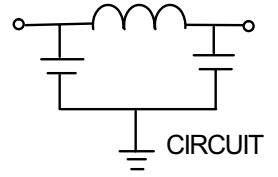


MARKETING SALES DRAWING
DIMENSIONS IN INCHES - DO NOT SCALE THIS DRAWING

Electrical Testing
per Tusonix standard
test plans and Mil-Std-202
Test Methods.



NOTE:

- HEX NUT AND INTERNAL TOOTH LOCK WASHER SUPPLIED.
- MIL PART NO. TO BE STAMPED ON HEX FLATS, 2 CHARACTERS PER FLAT (MI/57/33/61/00/01)

1500	200	200	10	32	45	70	70
	85°C	125 °C		50 MHz	100 MHz	1 GHz	10 GHz
MIN. CAP. (pF)	WORKING VOLTAGE (WVdc)		CURRENT IAC (A) (O-400 Hz)	MINIMUM NO LOAD INSERTION LOSS (dB) AT 25°C PER MIL-STD -220			

REVISION RECORD Original Release C.O. 19980929-4-01	0	TOLERANCES unless otherwise specified 2 PLC. DECIMAL ± N/A 3 PLC. DECIMAL ± .031 ANGLES ± N/A	Title BUSHING STYLE EMI FILTER	
	Drawn S.M. 10-08-98 Scale 3X			
	TUSONIX TUCSON, ARIZONA		Approved J.Mc. 10-08-98	
	A	4204-500		

X-2015 Rev-0