

NOTES:

- 1) SUGGESTED MOUNTING HOLE =  $\phi 0.170$ "
- 2) HARDWARE IS INCLUDED.
- 3) THIS IS A LEAD FREE PRODUCT.
- 4) MAX REFLOW IS 245°C FOR 5 SEC.

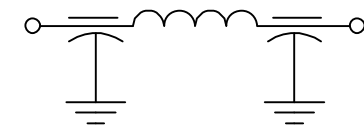


BUSHING FINISH:	SILVER
LEAD FINISH:	SILVER
CAPACITANCE	.012 $\mu$ F GMV
TEMP. RANGE	-55°C TO +125°C
CURRENT	10 AMP
WORKING VOLTAGE	85°C 200 VDC 125°C 150 VDC

IL=PER MIL-STD-220, @25°C N/L

FREQ. MHz	I.L. (db)	FREQ. MHz	I.L. (db)
1	3	50	60
5	17	100	65
10	28	200	65
20	45	1 GHz	70

SCHEMATIC



MARKING:

PART: SCI-1293F-000

BAG: SCI-1293F-000

DATE CODE

LOT NUMBER

QTY/BAG(100 MAX.)

			02	01	00	REV. NO.	TOLERANCES UNLESS OTHERWISE SPECIFIED
			CN #3051	CN 30514-CPD	CN 19022-CPD	CHANGE NOTICE	Fractions $\pm 1/64$
							Dec. .xx $\pm$
							Dec. .xxx $\pm .010$
							Angles $\pm 0^{\circ} 30'$
							CODE IDENT. NO. DLSP2



FAIRVIEW  
PENNSYLVANIA

Dwn. KNOWLTON  
Ckd. 4-17-14

Description  
Pi, RESIN SEAL FILTER

B. DEVINE  
Scale NONE

1293F-000