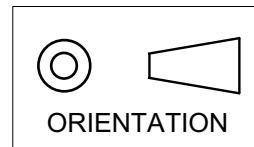
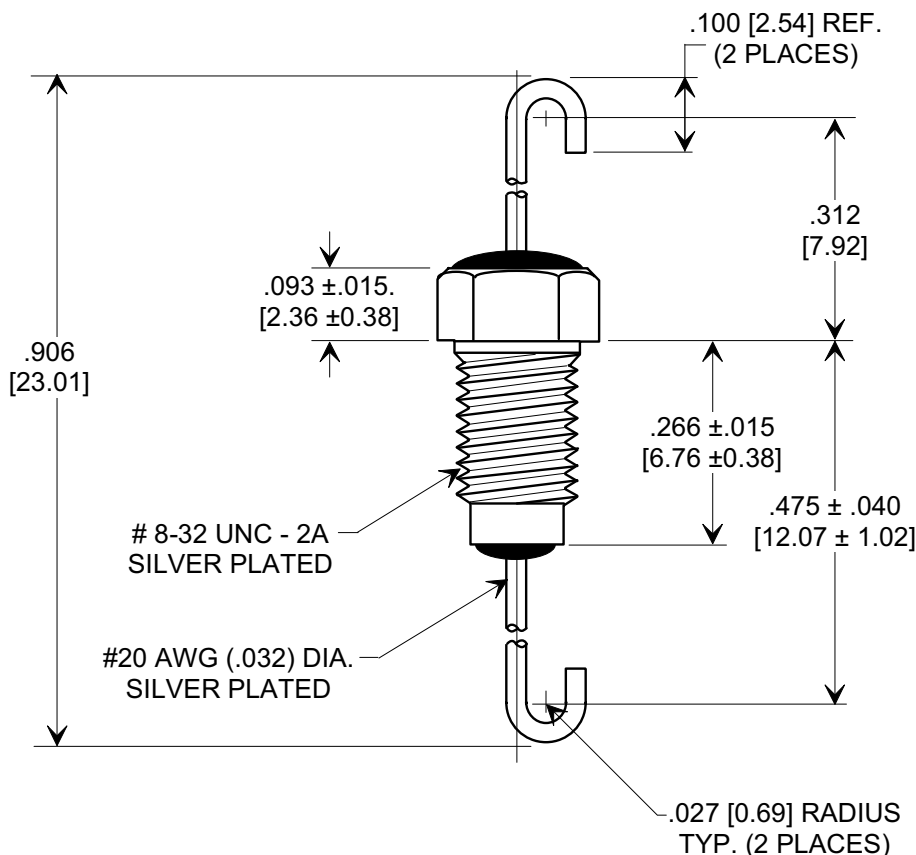
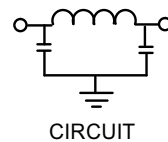
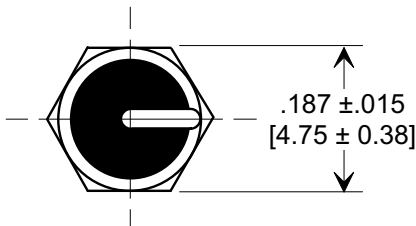


This drawing is the property of Tusonix, Inc., and may not be used, reproduced, published or disclosed to others without expressed authorization by Tusonix Inc.

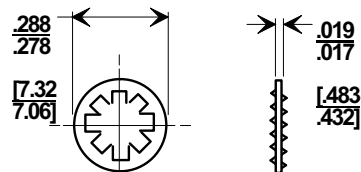
MARKETING SALES DRAWING
DIMENSIONS IN INCHES - DO NOT SCALE THIS DRAWING
DIMENSIONS IN METRIC - []



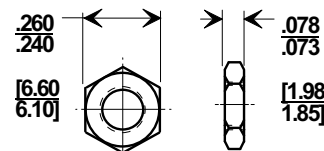
Electrical Testing
per Tusonix standard
test plans and Mil-Std-202
Test Methods.



MOUNTING HARDWARE



LOCK WASHER



HEX NUT

NOTE:

- SUPPLIED WITH SILVER PLATED NUT AND INTERNAL TOOTH LOCK WASHER.
- MOUNTING TORQUE NOT TO EXCEED 3 lb-in.

MIN. CAP (pF)	WORKING VOLTAGE	CURRENT	MINIMUM NO LOAD INSERTION LOSS (dB) @ 25°C PER MIL-STD-220			
	125°C		50 MHz	100 MHz	1 GHz	10 GHz
1500	100	10A	25	45	60	60

X-2015 Rev-0 REVISION RECORD Original Release C.O. ECO-666	A	--TOLERANCES-- Unless Otherwise Specified	Title MIL-15733/28-0002	
			BUSHING STYLE EMI FILTER	
		DECIMAL ± .031	Drawn L.E. 04-15-09	Scale 4 X
		ANGLES ±	Approved R.L. 04-15-09	
	 TUCSON, ARIZONA	A	4201-503	