

T-39-21

INTERNATIONAL RECTIFIER

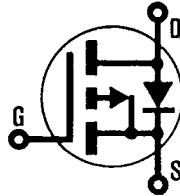
INTERNATIONAL RECTIFIER 

HEXFET® TRANSISTORS

IRF9Z30

IRF9Z32

**P-CHANNEL
50 VOLT
POWER MOSFETS**



**-50 Volt, 0.14 Ohm, HEXFET
TO-220AB Plastic Package**

The HEXFET® technology is the key to International Rectifier's advanced line of power MOSFET transistors. The efficient geometry and unique processing of the HEXFET design achieve very low on-state resistance combined with high transconductance and extreme device ruggedness.

The P-Channel HEXFETs are designed for applications which require the convenience of reverse polarity operation. They retain all of the features of the more common N-Channel HEXFETs such as voltage control, very fast switching, ease of paralleling, and excellent temperature stability.

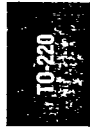
P-Channel HEXFETs are intended for use in power stages where complementary symmetry with N-Channel devices offers circuit simplification. They are also very useful in drive stages because of the circuit versatility offered by the reverse polarity connection. Applications include motor control, audio amplifiers, switched mode converters, control circuit and pulse amplifiers.

Features

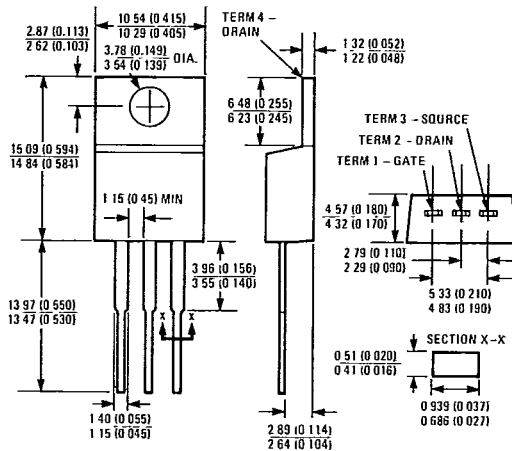
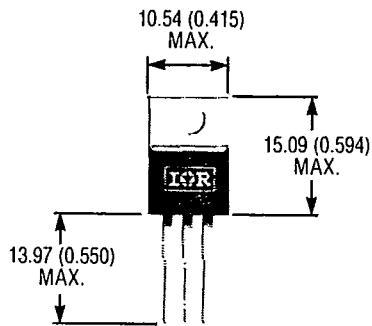
- P-Channel Versatility
- Compact Plastic Package
- Fast Switching
- Low Drive Current
- Ease of Paralleling
- Excellent Temperature Stability

Product Summary

Part Number	V _{DS}	R _{DS(on)}	I _D
IRF9Z30	-50V	0.14Ω	-18A
IRF9Z32	-50V	0.21Ω	-15A



CASE STYLE AND DIMENSIONS



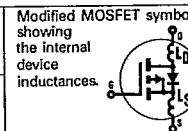
Case Style TO-220AB
Dimensions in Millimeters and (Inches)

Absolute Maximum Ratings

Parameter	IRF9Z30	IRF9Z32	Units
V _{DS} Drain - Source Voltage ①	-60	-60	V
V _{DGR} Drain - Gate Voltage (R _{GS} = 20 kΩ) ①	-60	-60	V
I _D @ T _C = 25°C Continuous Drain Current	-18	-15	A
I _D @ T _C = 100°C Continuous Drain Current	-11	-9.3	A
I _{DM} Pulsed Drain Current ②	-60	-60	A
V _{GS} Gate - Source Voltage	±20		V
P _D @ T _C = 25°C Max. Power Dissipation	74		W
Linear Derating Factor	0.59		W/K ③
I _{LM} Inductive Current, Clamped	(See Fig. 14) L = 100μH		A
I _L Unclamped Inductive Current (Avalanche Current) ③	-3.1		A
T _J Operating Junction and Storage Temperature Range	-55 to 150		°C
T _{stg} Lead Temperature	300 (0.063 in. (1.6mm) from case for 10s)		°C

Electrical Characteristics @ T_C = 25°C (Unless Otherwise Specified)

Parameter	Type	Min.	Typ.	Max.	Units	Test Conditions
BV _{DSS} Drain - Source Breakdown Voltage	IRF9Z30	-50	-	-	V	V _{GS} = 0V I _D = -250 μA
	IRF9Z32	-	-	-	-	
V _{GS(th)} Gate Threshold Voltage	ALL	-2.0	-	-4.0	V	V _{DS} = V _{GS} , I _D = -250 μA
I _{GSS} Gate-Source Leakage Forward	ALL	-	-	-500	nA	V _{GS} = -20V
I _{GSS} Gate-Source Leakage Reverse	ALL	-	-	500	nA	V _{GS} = 20V
I _{DSS} Zero Gate Voltage Drain Current	ALL	-	-	-250	μA	V _{DS} = Max. Rating, V _{GS} = 0V
		-	-	-1000	μA	V _{DS} = Max. Rating × 0.8, V _{GS} = 0V, T _C = 125°C
I _{D(on)} On-State Drain Current ④	IRF9Z30	-18	-	-	A	V _{DS} > I _{D(on)} × R _{DS(on)max} , V _{GS} = -10V
	IRF9Z32	-15	-	-	A	
R _{DS(on)} Static Drain-Source On-State Resistance ④	IRF9Z30	-	0.093	0.14	Ω	V _{GS} = -10V, I _D = -9.3A
	IRF9Z32	-	0.14	0.21	Ω	
g _{fs} Forward Transconductance ④	ALL	3.1	4.7	-	S(O)	V _{DS} = 2 × V _{GS} , I _{DS} = -9.0A
C _{iss} Input Capacitance	ALL	-	900	-	pF	V _{GS} = 0V, V _{DS} = -25V, f = 1.0 MHz
C _{oss} Output Capacitance	ALL	-	670	-	pF	See Fig. 10
C _{rss} Reverse Transfer Capacitance	ALL	-	140	-	pF	
t _{d(on)} Turn-On Delay Time	ALL	-	12	18	ns	V _{DD} = -25V, I _D ≈ -18A, R _G = 13Ω, R _D = 1.3Ω
t _r Rise Time	ALL	-	110	170	ns	See Fig. 16
t _{d(off)} Turn-Off Delay Time	ALL	-	21	32	ns	(MOSFET switching times are essentially independent of operating temperature.)
t _f Fall Time	ALL	-	64	96	ns	
Q _g Total Gate Charge (Gate-Source Plus Gate-Drain)	ALL	-	26	39	nC	V _{GS} = -10V, I _D = -18A, V _{DS} = 0.8 Max. Rating. See Fig. 17 for test circuit. (Gate charge is essentially independent of operating temperature.)
Q _{gs} Gate-Source Charge	ALL	-	6.9	10	nC	
Q _{gd} Gate-Drain ("Miller") Charge	ALL	-	9.7	15	nC	
L _D Internal Drain Inductance	ALL	-	4.5	-	nH	Measured from the drain lead, 6mm (0.25 in.) from package to center of die.
L _S Internal Source Inductance	ALL	-	7.5	-	nH	Measured from the source lead, 6mm (0.25 in.) from package to source bonding pad.




Thermal Resistance

R _{thJC} Junction-to-Case	ALL	-	-	1.7	K/W ⑤	
R _{thCS} Case-to-Sink	ALL	-	1.0	-	K/W ⑤	Mounting surface flat, smooth, and greased.
R _{thJA} Junction-to-Ambient	ALL	-	-	80	K/W ⑤	Typical socket mount

INTERNATIONAL RECTIFIER

Source-Drain Diode Ratings and Characteristics

T-39-21

I_S	Continuous Source Current (Body Diode)	IRF9Z30	—	—	-18	A	Modified MOSFET symbol showing the integral reverse PN junction rectifier. 
		IRF9Z32	—	—	-15	A	
I_{SM}	Pulse Source Current (Body Diode) ③	IRF9Z30	—	—	-60	A	
		IRF9Z32	—	—	-50	A	
V_{SD}	Diode Forward Voltage ②	ALL	—	—	-6.3	V	$T_C = 25^\circ\text{C}, I_S = -18\text{A}, V_{GS} = 0\text{V}$
t_{rr}	Reverse Recovery Time	ALL	54	120	250	ns	$T_J = 25^\circ\text{C}, I_F = -18\text{A}, di/dt = 100\text{A}/\mu\text{s}$
Q_{RR}	Reverse Recovered Charge	ALL	0.20	0.47	1.1	μC	$T_J = 25^\circ\text{C}, I_F = -18\text{A}, di/dt = 100\text{A}/\mu\text{s}$
t_{on}	Forward Turn-on Time	ALL	Intrinsic turn-on time is negligible. Turn-on speed is substantially controlled by $L_S + L_D$.				

- ① $T_J = 25^\circ\text{C}$ to 150°C
- ② Repetitive Rating: Pulse width limited by max. junction temperature. See Transient Thermal Impedance Curve (Fig. 5).
- ③ @ $V_{dd} = -25\text{V}, T_J = 25^\circ\text{C}$
- ④ Pulse Test: Pulse width $\leq 300 \mu\text{s}$, Duty Cycle $\leq 2\%$
- ⑤ $K/W = ^\circ\text{C}/\text{W}$
- $W/K = \text{W}/^\circ\text{C}$
- $L = 100 \mu\text{H}, R_G = 25\Omega$

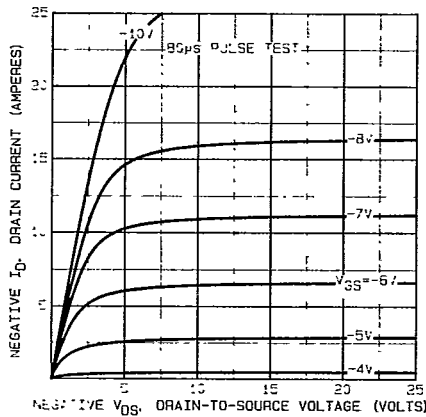


Fig. 1 — Typical Output Characteristics

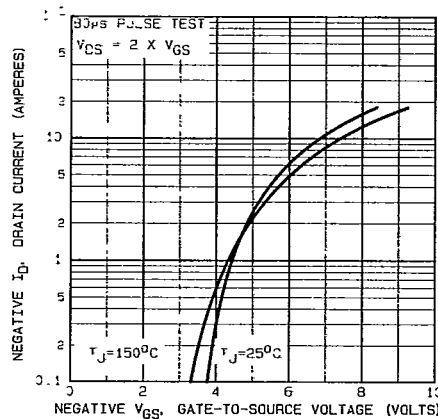


Fig. 2 — Typical Transfer Characteristics

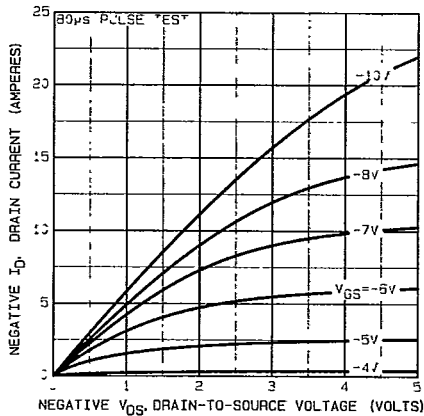


Fig. 3 — Typical Saturation Characteristics

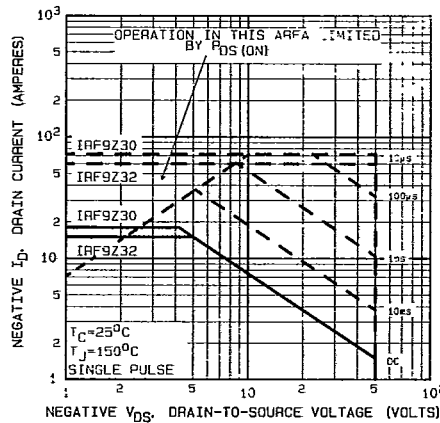
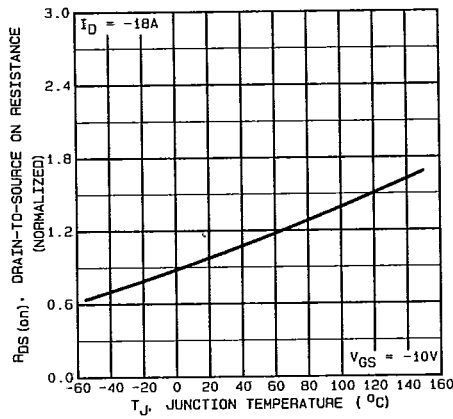
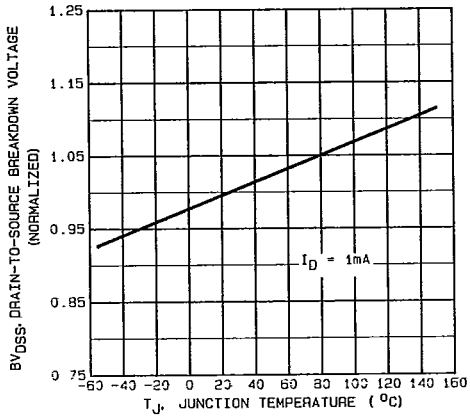
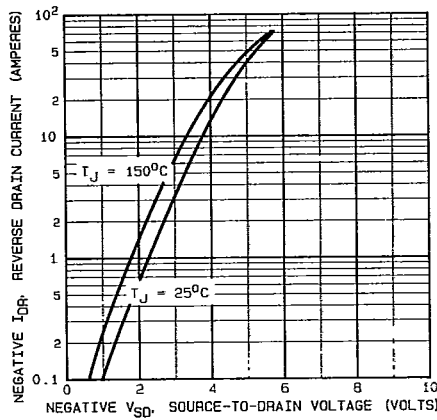
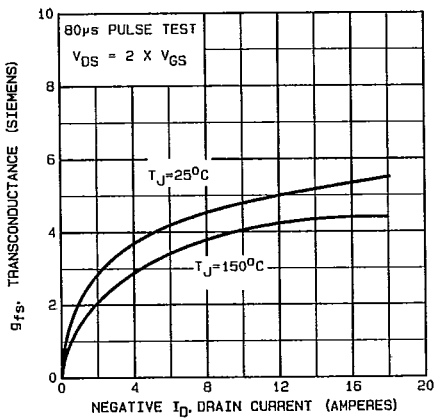
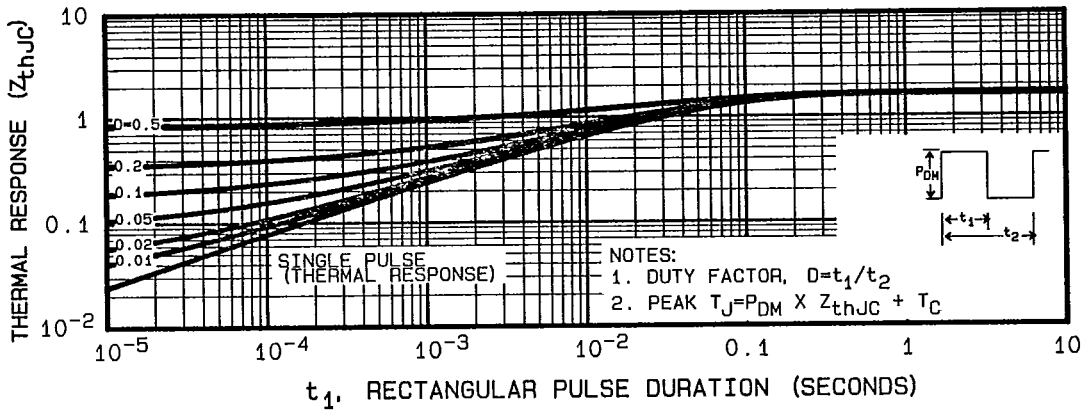


Fig. 4 — Maximum Safe Operating Area

T0-220



INTERNATIONAL RECTIFIER

IRF9Z30, IRF9Z32 Devices

T-39-21

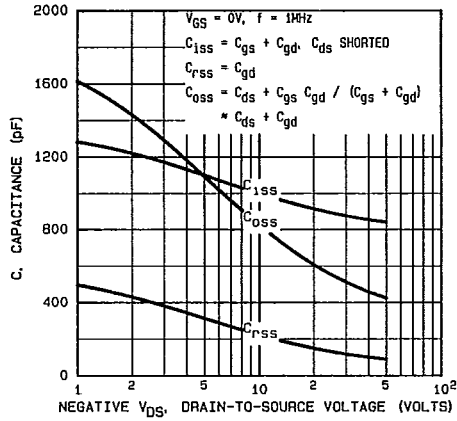


Fig. 10 — Typical Capacitance Vs. Drain-to-Source Voltage

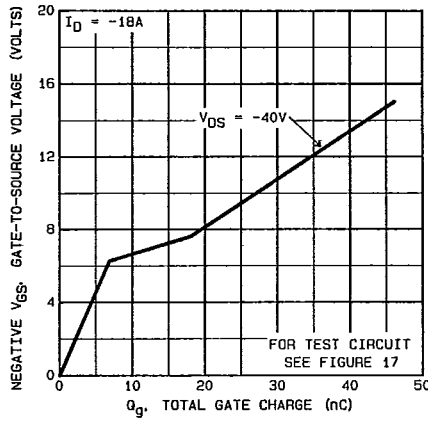


Fig. 11 — Typical Gate Charge Vs. Gate-to-Source Voltage

TO-220

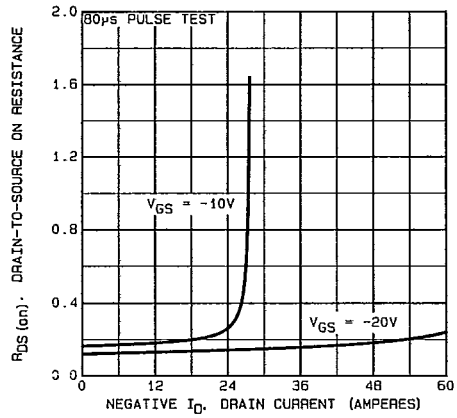


Fig. 12 — Typical On-Resistance Vs. Drain Current

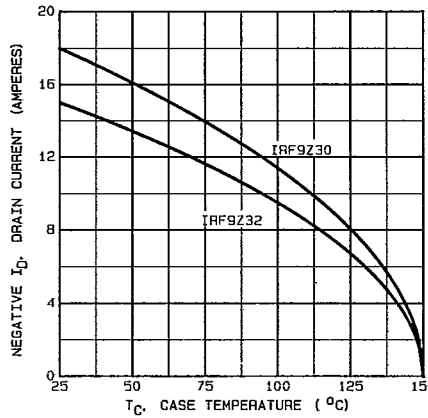


Fig. 13 — Maximum Drain Current Vs. Case Temperature

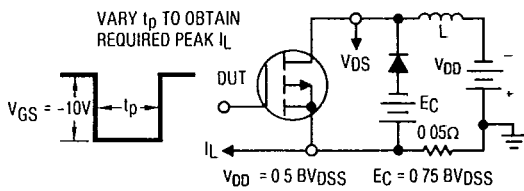


Fig. 14a — Clamped Inductive Test Circuit

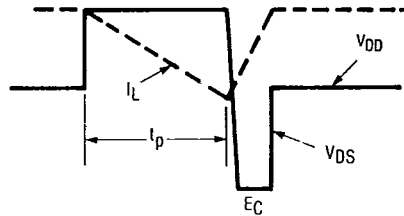


Fig. 14b — Clamped Inductive Waveforms

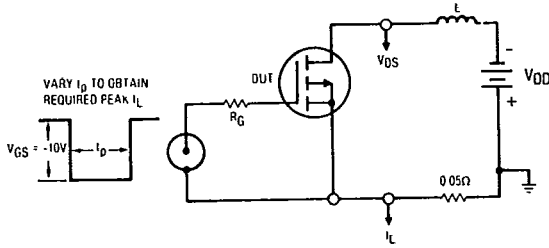


Fig. 15a — Unclamped Inductive Test Circuit

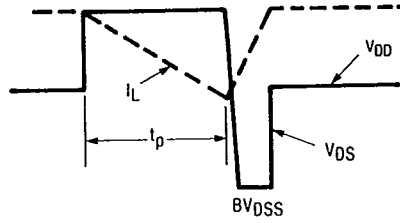


Fig. 15b — Unclamped Inductive Load Test Waveforms

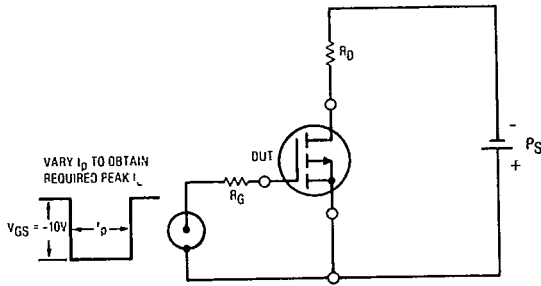


Fig. 16 — Switching Time Test Circuit

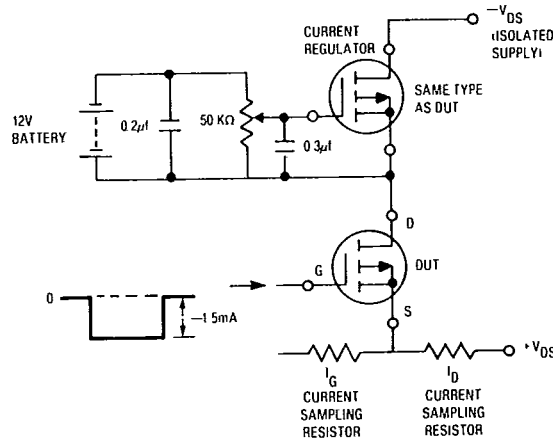
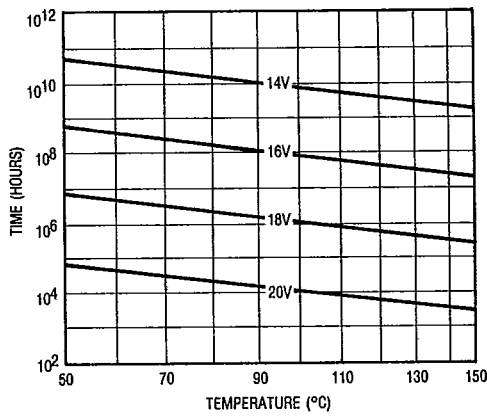
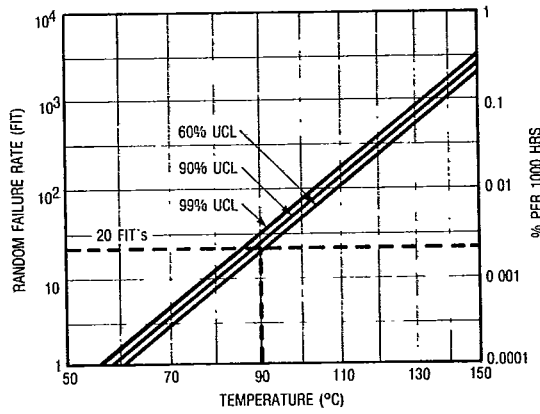


Fig. 17 — Gate Charge Test Circuit



*Fig. 18 — Typical time to Accumulated 1% Gate Failure



*Fig. 19 — Typical High Temperature Reverse Bias (HTRB) Failure Rate

*The data shown is correct as of April 15, 1987. This information is updated on a quarterly basis; for the latest reliability data, please contact your local IR field office.